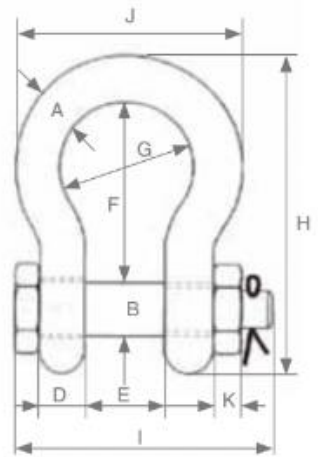


Green Pin Standard Safety Bow Shackles

Green Pin 'Van Beest' Shackles are the premium shackle for offshore use in the region. These shackles are available in a number of configurations, of which 'Safety Bows' are one of the most popular.



SWL (tonne)	Dia. Bow (mm) ['a']	Dia. Pin (mm) ['b']	Dia. Eye (mm) ['c']	Width eye (mm) ['d']	Width inside (mm) ['e']	Length inside (mm) ['f']	Width bow (mm) ['g']	Length (mm) ['h']	Length Bolt (mm) ['i']	Width bow (mm) ['j']
0.5	7	8	17	7	12	29	20	54	43	37
0.75	9	10	21	9	13.5	32	22	61	51	42
1	10	11	23	10	17	36.5	26	71	61	49
1.5	11	13	26	11	19	43	29	80	68	54
2	13.5	16	34	13.5	22	51	32	91	83	63
3.25	16	19	40	16	27	64	43	114	99	79
4.75	19	22	47	19	31	76	51	136	115	94
6.5	22	25	53	22	36	83	58	157	131	107
8.5	25	28	60	25	43	95	68	176	151	124
9.5	28	32	67	28	47	108	75	197	167	137
12	32	35	74	32	51	115	83	218	179	154
13.5	35	38	80	35	57	133	92	240	198	170
17	38	42	89	38	60	146	99	262	203	183
25	45	50	104	45	74	178	126	314	244	226
35	50	57	119	50	83	197	138	358	270	250
42.5	57	65	134	57	95	222	160	414	302	287
55	65	70	145	65	105	260	180	463	330	329
85	75	83	163	75	127	329	190	556	376	355

Material: Bow and pin high tensile steel, Grade 6, quenched and tempered

Safety Factor: MBL equals 6 x WLL

Standard: EN 13889 and meets performance requirements of US Fed. Spec. RR-C-271 Type IVA Class 3, Grade A

Finish: Hot dipped galvanized

