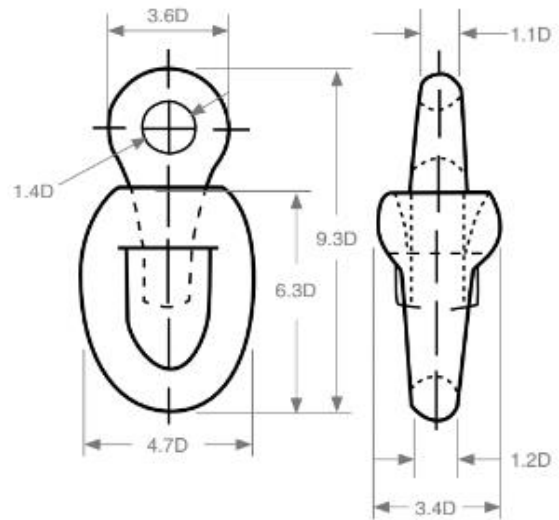
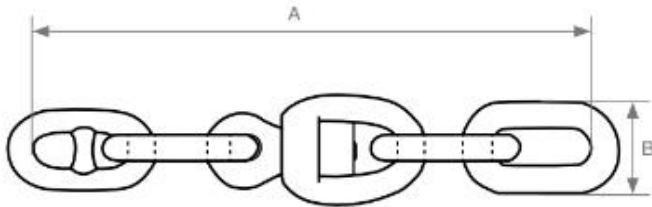
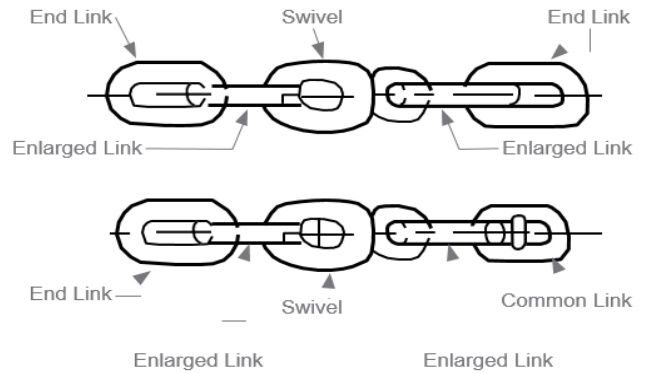


Swivel Forerunner Assembly



Size (mm)	Inside Length (mm) ['A']	Outside Width (mm) ['B']	Weight (Swivel ONLY) (kg)	Min Break Load Grade 2 (tonne)	Min Break Load Grade 3 (tonne)
12.5	274.6	50	0.9	9.4	13.5
16.0	392.8	64	1.7	15.3	22.0
17.5	418.9	70	2.1	18.3	26.1
19.0	466.5	76	2.8	21.5	30.7
20.5	512.1	82	3.8	24.9	35.6
22.0	540.1	88	4.4	28.6	40.9
24.0	589.2	96	5.2	33.9	48.5
26.0	623.5	104	6.8	39.7	56.7
32.0	785.6	128	12.7	59.4	84.9
34.0	834.7	136	17.5	66.8	95.5
40.0	982.0	160	29	91.4	131.0
50.0	1227.5	200	54	140.0	200.0
64.0	1571.2	256	90	223.0	319.0
76.0	1865.8	304	152	307.0	438.0
84.0	2062.2	336	190	368.0	526.0
94.0	2307.7	376	275	460.0	657.0



Typical Swivel Assemblies

All dimensions are approximate.
Other swivel assembly combinations are available.

