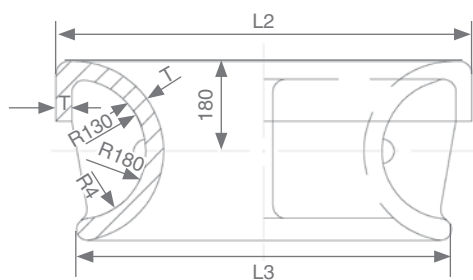
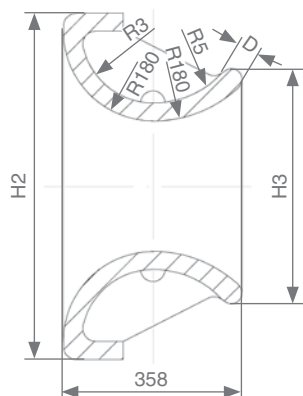
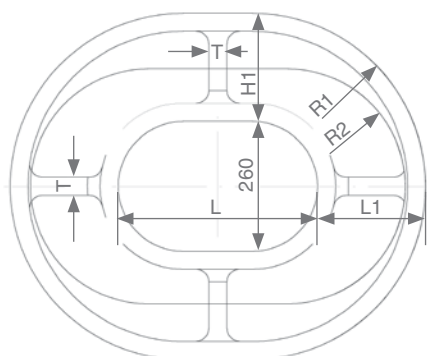


Deck Fittings and Wharf Furniture

Panama Chock

Used as both deck fittings or inserted into bulkheads for line passing for berthing, towing, etc.



Weight	L	L1	L2	L3	D	H1	H2	H3	R1	R2	R3	R4	R5	K	T
276kg	310	212	734	652	38	212	684	462	342	231	148	140	195	15	32
305kg	360	214	788	704	40	214	688	464	344	232	146	138	192	15	34
344kg	400	216	832	750	44	216	692	470	346	235	144	134	185	20	36
385kg	450	218	886	802	46	218	696	474	348	237	142	132	182	20	38
422kg	500	220	940	854	48	220	700	478	350	239	140	130	180	20	40